



Total Energy Solutions

VALVES & ENGINEERING



E-CATALOG
(English)



E-CATALOG
(Chinese)

Mt.H
CONTROL VALVES CO.,LTD.

Name **Mt.H Control Valves Co., Ltd**

Establishment 1978. April

Head Office & Factory #296 Noksansaneopjung-ro,
Gangseo-gu, Busan, Korea

Size Plant Size: 7,690m²
Building Size: 8,125m²

Contact No. Rep. No.+82. 51. 974. 8800
Fax. No.+82. 51. 974. 8888

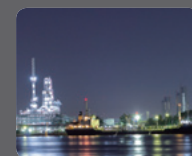
E-mail sale1@mth.co.kr(Domestic Sales)
sale2@mth.co.kr(Overseas Sales)

Homepage **www.mth.co.kr**

Mt.H SINCE 1978
CONTROL VALVES CO.,LTD.

ENGINEERING-ORIENTED ENERGY SOLUTION COMPANY

Leading the Future of Valve Engineering
with Innovative Technology



Since 1978, Mt.H Control Valves has contributed to global valve industry by providing the high-end solutions to our world-wide customers.

From Cryogenic LNG valves to Ultra-High pressure Hydrogen valves, we deliver the cutting-edge products through our seamless manufacturing process and advanced quality control system.

Mt.H Control Valves will continue to invest in the future of energy and create more sustainable world with innovative technology.

Total Energy Solutions

History

Mt.H Control Valves CO.,Ltd.
is a Reliable Lifetime partner.
Our top Priority is always Customer Satisfaction.



Vision 2030

A Leading Company
for Special Valves in the world



The 1970's | Building Foundations

- 1978 | Established Halla Automatic Valves
- 1985 | Concluded the license agreement with AKOGmbH in Germany.
- 1988 | First shipment of the valves for marine to Japan
- 1992 | Developed Pneumatic Control
- 1996 | Awarded "A-Mark" for Quality Control Prize by HHI
- 1997 | Developed Crank Case Relief Valve Flame Trap
- 1997 | Type approved by KR & ABS
- Main Starting Valves / Crank Case Relief Valves
- 1998 | Awarded the medal for developing by Prime Minister. CCRV



The 2000's | Expansion and Growth

- 2002 | Changed company name to "Mt.H Control Valves Co., Ltd"
- 2002 | Relocated factory to Nok-san National Industrial Complex
- 2005 | Established R&D Center
- 2006 | Registered R&D center NO.20052975
- 2007 | Achieved GTT Approval Certificate
- 2010 | Succeeded in developing a new Crank Case Relief Valve M30(CR51)Series



The 2010's | Rising as a Global Competitor

- 2011 | Registered in KOGAS as a major supplier for equipment (cryogenic pilot operated safety valves)
- 2012 | Supply Cryogenic PSV Safety Valve to LNG Terminal
- 2015 | Acquired "NBBI Capacity Certification" & "ASME UV Stamp"
- 2015 | Delivered ME-GI Engine Ventilation Valve
- 2018 | Supply Cryogenic PSV Safety Valves to LNG Terminal (GWANGYANG, AEWOL, INCHEON, POSCO, GHANA etc.)



The 2020's | Becoming a World Class

- 2022 | Development of Flow Control Valve for H2 Dispenser
- 2022 | Supply Flow Control Valve to Dispenser of H2 Station
- 2023 | Signs MOU with SK E&S
- 2023 | LH2 ESV & SV are under development as an Government Collaboration project.

Customers Satisfaction



Engineering Oriented Production

We always think from customers perspective and provide the most desirable solutions.
Our continuous effort to make innovative products will guarantee solid reliability to our customers.



▼ Safety Relief Valves for Cryogenic (-196 to 80°C)

Pilot Operated Safety Relief Valves [Diaphragm Type]

Model		HSF-OVT	
Fluid		LNG, LPG, O ₂ , N ₂ , CO ₂ , etc	
Type		WDR	DR
Sealing Type		Soft Sealing	
Setting Pressure	WDR	0.01 to 0.1 kg/cm ²	
	DR	0.05 to 1.5 kg/cm ²	
Working Temperature		-196 to 80 °C	
Material	Body	A351-CF8 / CF8M / CF3 / CF3M	
	Trim	Stainless Steel	
Service		Nature Gas & Petroleum Drilling	
		LNG/LPG Carrier	LEG Storage
		Receiving Terminals Tank	



Pilot Operated Safety Relief Valves [Piston Type]

Model		HSP-MP	
Fluid		LNG, LPG, O ₂ , N ₂ , CO ₂ , etc	
Type		Single	Dual
Sealing Type		Soft Sealing	
Setting Pressure		1 to 10 kg/cm ²	
Working Temperature		-196 to 80 °C	
Material	Body	A351-CF8 / CF8M / CF3 / CF3M	
	Trim	Stainless Steel	
Service		Nature Gas & Petroleum Drilling	
		LNG/LPG Carrier	LEG Storage
		Receiving Terminals Tank	



Spring Loaded Safety Relief Valves

Model		HSF-FCA	
Fluid		LNG, LPG, O ₂ , N ₂ , CO ₂ , etc	
Type		Conventional	Bellows
Sealing Type		Metal Sealing	Soft Sealing
Setting Pressure		1 to 10 kg/cm ²	1 to 350 kg/cm ²
Working Temperature		-196 to 80 °C	
Material	Body	A351-CF8 / CF8M / CF3 / CF3M	
	Trim	Stainless Steel	
Service		Nature Gas & Petroleum Drilling	
		LNG/LPG Carrier	LEG Storage
		Receiving Terminals Tank	



▼ Safety Relief Valves for Ambient Temperature

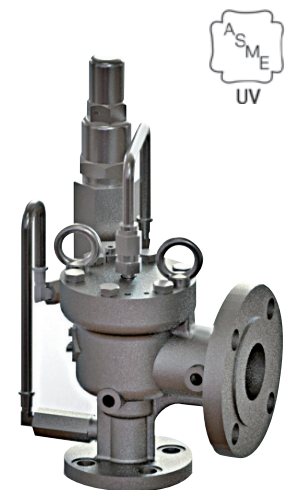
Conventional Safety Relief Valves [ASME Type]

Model		SC32	
Fluid		Air, Gas, Steam, Liquid	
Type		Conventional	Bellows
Sealing Type		Metal Sealing	
Setting Pressure		1 to 400 kg/cm ²	
Working Temperature		0 to 300 °C	
Material	Body	A351-CF8 / CF8M / CF3 / CF3M	
	Trim	Stainless Steel	
Service		Nature Gas & Petroleum Drilling	
		LNG/LPG Carrier	LEG Storage
		Receiving Terminals Tank	



Pilot Operated Safety Relief Valves [Piston Type]

Model		SP32	
Fluid		Air, Gas, Steam, Liquid	
Type		Snap Acting	Modulating
Sealing Type		Soft Sealing	
Setting Pressure	Snap Acting	1 to 400 kg/cm ²	
	Modulating	1 to 150 kg/cm ²	
Working Temperature		0 to 260 °C	
Material	Body	A351-CF8 / CF8M / CF3 / CF3M	
	Trim	Stainless Steel	
Service		Petrochemical Plant	
		Boiler	



Spring Loaded Safety Relief Valves

Model		HSF-F	
Fluid		Air, Gas, Steam, Liquid	
Type		Normal	
Sealing Type		Metal Sealing	
Setting Pressure		1 to 300 kg/cm ²	
Working Temperature		0 to 220 °C	
Material	Body	A351-CF8 / CF8M / CF3 / CF3M	
	Trim	Stainless Steel	
Service		Nature Gas & Petroleum Drilling	
		LNG/LPG Carrier	LEG Storage
		Receiving Terminals Tank	



▼ Control Valves for Cryogenic (-196 to 80°C)

2-Way Control Valves [Diaphragm & Cylinder Type]

Model	CC23	CC11
Actuator	Cylinder	Diaphragm
Fluid	LNG, LPG, LO ₂ , LN ₂ , LAr, LHe	
Pressure Range	ANSI Class 150 ~ 2500	
Valve Size	1" ~ 6"	
Working Temperature	-196 to 80 °C	
Material	Body	A351-CF8 / CF8M / CF3 / CF3M / A182-F316 / A182-F316L
	Trim	A276-316L
	Gasket: Spiral Wounded Graphite	



Joule Thomson Valves

Model	JT11	
Fluid	LNG , LPG , etc	
Pressure Range	ANSI Class 2500	
Valve Size	1" ~ 2"	
Working Temperature	-196 to 80 °C	
Material	Body	A351-CF8 / CF8M / CF3 / CF3M
	Trim	A276-316L / etc Gasket: Spiral Wounded Graphite
Service	HP Compressor	
	Gas Supply Unit (HP Pump + Vaporizer)	



▼ Control Valves for Ambient Temperature

2,3-Way Diaphragm Valves

Model	HND(2-WAY)	HCC(2-WAY)	HPT(3-WAY)
Actuator	Diaphragm	Cylinder	Diaphragm
Fluid	Air, Gas, Steam, Liquid		
Pressure Range	ANSI Class 150 ~ 300		
Valve Size	1/2" ~ 6" Flange		
Working Temperature	0 to 220 °C		
Material	Body	SC480 / FCD450	
	Trim	A276-304	
	Gasket: Non-Asbestos		



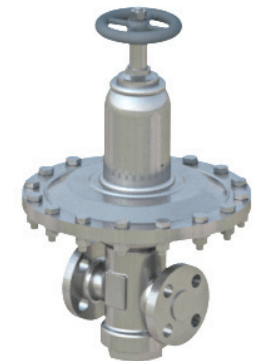
2-Way Control Valves [Diaphragm & Cylinder Type]

Model	CG23	CG11
Actuator	Cylinder	Diaphragm
Fluid	Air, Gas, Steam, Liquid	
Pressure Range	ANSI Class 150 ~ 2500	
Valve Size	1/2" ~ 8"	
Working Temperature	-50 to 80 °C	
Material	Body	A351-CF8/CF8M/CF3/CF3M
	Trim	A276-304
	Gasket: Spiral Wounded Graphite	



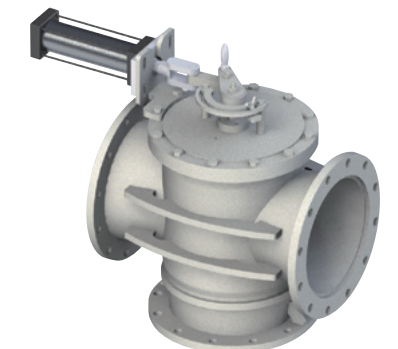
Pressure Reducing Valves [Diaphragm Type]

Model	HRD	
Fluid	Air, N ₂ , Methane, Ethane, etc	
Pressure Range	ANSI Class 150 ~ 300	
Valve Size	1/2" ~ 1" Flange	
Working Temperature	-50 to 80°C	
Material	Body	A351 CF3M
	Trim	A276 316
Service	ME-GA/ MELGIM	
	ME-GI/ ME-GIE/ ME-LGIP	



3-Way Rotary Valves

Model	PRC	
Fluid	Air, Gas, Steam, Liquid	
Pressure Range	JIS 5K / 10K	
Valve Size	4" ~ 22"	
Working Temperature	0 to 80 °C	
Material	Body	FCD450 / SS400
	Trim	A276-304
	Gasket: Non-Asbestos	



▼ Fuel Tank Valves

Vacuum Breaker [Weight Loaded Type]

Model	HVB-DW	
Fluid	Air, Vapor, Gas	
Type	Weight Loaded	
Vacuum Setting Pressure	1/2 oz/in2 [-2.2mbarg to -6.6 mbarg]	
Working Temperature	0 to 80 °C [Ambient]	
Valve Size	4", 8", 12"	
Material	Body	A351-CF8M / CF3M / B26 356-T6
	Trim	Stainless Steel & Soft Seat
Service	Low Pressure Storage Tank	
	Receiving Terminals Tank	



PSV Isolation Valves [Sliding-Gate Type]

Model	PI00C	
Fluid	LNG, LPG, O ₂ , N ₂ , CO ₂ , etc	
Type	Sliding Gate Type	
Sealing Type	Soft Sealing	
Working Temperature	-196 to 80 °C	
Valve Size	8", 10", 12"	
Material	Body	A351-CF8 / CF8M / CF3 / CF3M
	Trim	Stainless Steel + PCTFE
Service	Low Pressure Storage Tank	
	Receiving Terminals Tank	



▼ Engine System Valve

3-Way Pneumatic Control Valves [for LDCL System]

Model	CT11C	
Fluid	Liquid	
Working Pressure	16 kg/cm ²	
Working Temperature	Max. 140°C	
Valve	Rating	PN 16
	Size	DN80 / DN100 / DN125 / DN150 / DN200
Material	Body	FCD450
	Trim	SCS13

※ Supply Air : 2 bar



Butterfly Valves [for Exhaust Waste Gate]

Model	EB25C	
Fluid	Exhaust Gas	
Type	Wafer Type	
Working Pressure	10 kg/cm ²	
Working Temperature	up to 650°C	
Valve	Rating	PN 16
	Size	DN40 / DN80
Material	Body	A351 - CF8M
	Trim	Stainless Steel

※ Supply Air : 4 ~ 7 kg/cm²



Crank Case Relief Valve

Model	CR51(M30), CR52(M20)	
Sizes	98~735	
Service Temperature	Max.80°C	
Set Pressure	+0.05 barg	
Design	Spring loaded, Frame Arresters	
Service	Oil Engines	
Fluid	Gas	
Code	Classification of Society, IACS UR M66, MDT's Quality Specification	



Main Engine Starting Valve

Model	MS01F / MS02F / MS01C / MS02C(HMD / HMS / HMDD / HMSS)	
Sizes	DN65, DN100, DN150, DN200	
Service Temperature	Max.80°C	
Max. Inlet Pressure	33 barg	
Design	With Slow-Turning Device or Without Slow-Turning Devices	
Service	Engines	
Fluid	Compressed Air	
Code	Classification of Society, MDT's Quality Specification	



▼ Fuel Valve Train

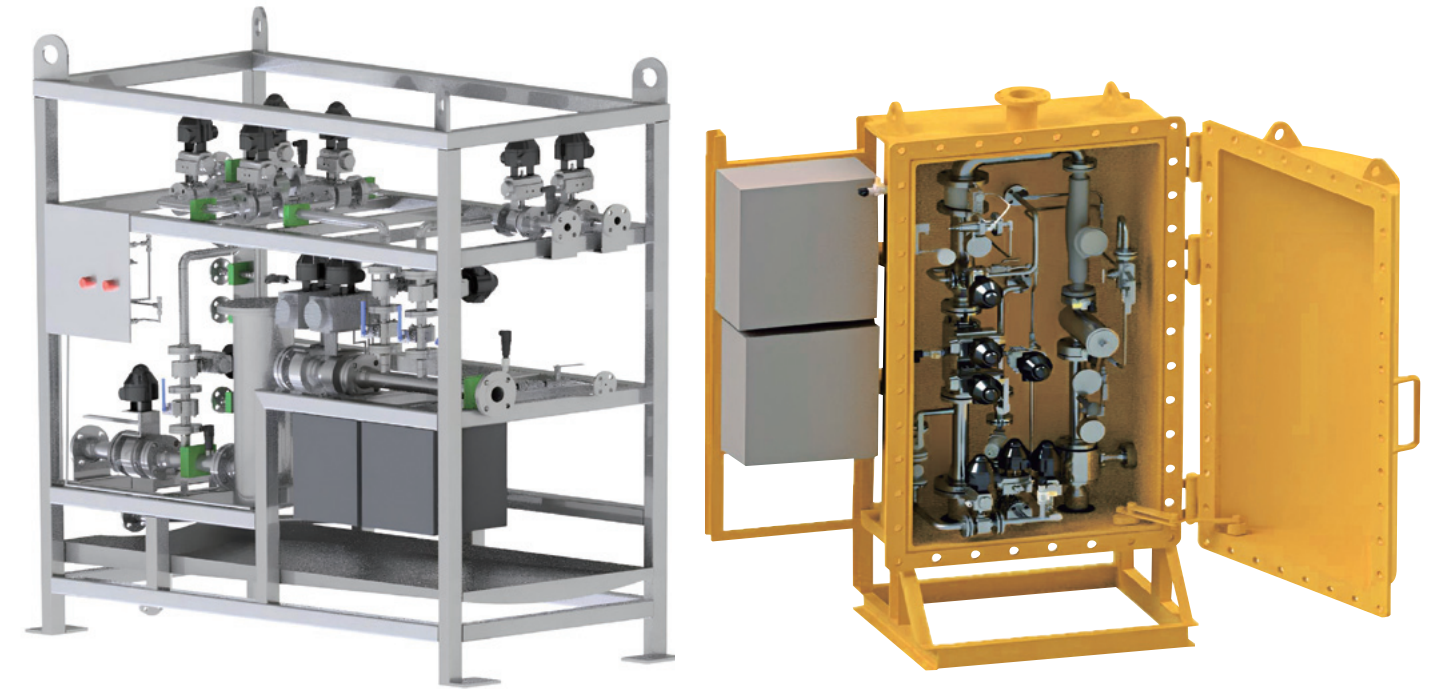
Fluid	Methanol, Ammonia	
Design Pressure	0 ~ 16 bar	
Size	Main Line : 1inch	Purge and Bleed Line : 1/2inch
Working Temperature	-25°C ~ 60°C	
Material in contact to media	Stainless steel	
Service	Low-flashpoint Fuel Supply System(LFSS)	
	Supply fuel to the 2stroke ME-LGIM(-W) engine	

▼ Gas Regulating Unit

Fluid	Fuel Gas	
Design Pressure	0 ~ 10 bar	
Size	Fuel from supply system : DN50	Vent Line : DN25
Working Temperature	0°C ~ 50°C	
Material in contact to media	Stainless steel	
Service	DF-engines	

▼ Gas Valve Unit

Fluid	Fuel Gas	
Design Pressure	0 ~ 16 bar	
Size	Fuel from supply system : 4inch	Vent Line : 1/2inch
Working Temperature	-25°C ~ 60°C	
Material in contact to media	Stainless steel	
Service	Low-flashpoint Fuel Supply System(LFSS)	
	ME-GA engines	



▼ Fuel Valve Train

▼ Gas Regulating Unit



▼ Gas Valve Unit

Total Energy Solutions

Gas Hydrogen

99.9 MPa Flow Control Valves

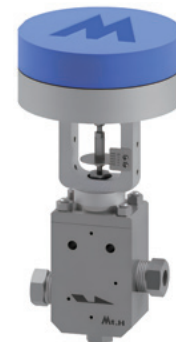
Model		HV-C0			
Fluid		Gas Hydrogen, He, O ₂ , N ₂ , CO ₂ , CH ₄ , NH ₃			
Pressure Range		Up to 99.9 Mpa [Up to 999 barg]			
Working Temperature		-10 ~ 85°C			
Material	Body	Stainless Steel			
	Trim	Stainless Steel			
Connection Size	Tube Size	1/4"	3/8"	9/16"	3/4"
	Max. Cv	0.15	0.25	0.25	0.5



※ Stop valves without positioner also available.

99.9 MPa Flow Stop Valves

Model		HV-ST-01			
Fluid		Gas Hydrogen, He, O ₂ , N ₂ , CO ₂ , CH ₄ , NH ₃			
Pressure Range		Up to 99.9 Mpa [Up to 999 barg]			
Working Temperature		-10 ~ 85°C			
Material	Body	Stainless Steel			
	Trim	Stainless Steel			
Connection Size	Tube Size	1/4"	3/8"	9/16"	3/4"
	Max. Cv	0.15	0.25	0.25	0.5



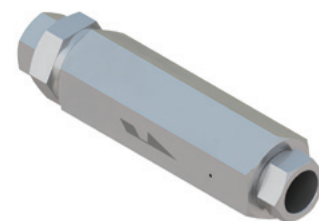
99.9 MPa Low Temperature Flow Stop Valves

Model		HV-ST-02			
Fluid		Gas Hydrogen, He, O ₂ , N ₂ , CO ₂ , CH ₄ , NH ₃			
Pressure Range		Up to 99.9 Mpa [Up to 999 barg]			
Working Temperature		-40 ~ 85°C			
Material	Body	Stainless Steel			
	Trim	Stainless Steel			
Connection Size	Tube Size	1/4"	3/8"	9/16"	3/4"
	Max. Cv	0.15	0.25	0.25	0.5



99.9 MPa Line Check Valves

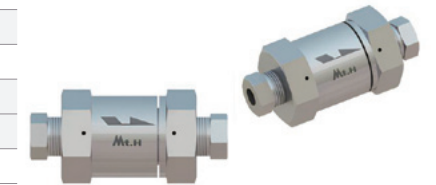
Model		HV-CH-01				
Fluid		Gas Hydrogen, He, O ₂ , N ₂ , CO ₂ , CH ₄ , NH ₃				
Pressure Range		Up to 99.9 MPa [Up to 999 bar]				
Working Temperature		-18 ~ 85°C				
Material	Body	Stainless Steel				
	Trim	Stainless Steel + O-RING [90 Duro FKM]				
Connection Size	Tube Size	1/4"	3/8"	9/16"	3/4"	1"
	Max. Cv	0.15	0.25	2.3	4.7	7.4



※ Cracking Pressure : 20psi [1.38 bar] ± 30%

99.9 MPa Filter

Model		HV-ST			
Fluid		Gas Hydrogen, He, O ₂ , N ₂ , CO ₂ , CH ₄ , NH ₃			
Pressure Range		Up to 99.9 Mpa [Up to 999 barg]			
Working Temperature		-40 ~ 85°C			
Material	Body	Stainless Steel			
	Trim	Stainless Steel			
Connection Size	Tube Size	1/4"	3/8"	9/16"	3/4"
	Max. Cv	0.15	0.25	0.25	0.5



※ Filter size from 2µm

Liquid Hydrogen

Emergency Shut-Off Valves

Model		HV-EV		
Fluid		Liquid Hydrogen, LNG, LPG, LN ₂ , LAr, LO ₂		
Pressure Range		Up to 2.0 MPa [Up to 20 bar]		
Working Temperature		-273(-196) ~ 85°C		
Material	Body	Stainless Steel		
	Trim	Stainless Steel		
Connection Size	DN	25	32	50
	PN	25		



※ Stop valves without positioner also available.

Lift Check Valves

Model		HV-CH-02		
Fluid		Liquid Hydrogen, LNG, LPG, LN ₂ , LAr, LO ₂		
Pressure Range		Up to 2.0 MPa [Up to 20 bar]		
Working Temperature		-273(-196) ~ 85°C		
Material	Body	Stainless Steel		
	Trim	Stainless Steel + PCTFE		
Connection Size	DN	10	15	25
	PN	40		

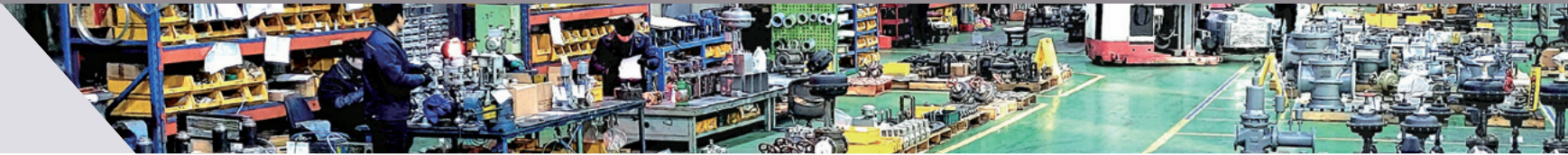


※ Cracking Pressure : 0.1 bar ± 30%

Conventional Safety Relief Valves

Model		HV-SV-02	
Fluid		Liquid Hydrogen, LNG, LPG, LN ₂ , LAr, LO ₂	
Setting Pressure Range		Up to 2.0 MPa [Up to 20 bar]	
Working Temperature		-273(-196) ~ 85°C	
Material	Body	A351 CF8M	
	Trim	Stainless Steel	
Connection Size	Flange Rating	Inlet x Outlet	
	#150 x #150	1" x 2"	





▼ Certificate

» Marine Classification



▼ Facilities

| Pattern / Mold Storage |



| Machining Shop |



| Assembly shop |



| Paint / Packing shop |



» SHEQ & Product



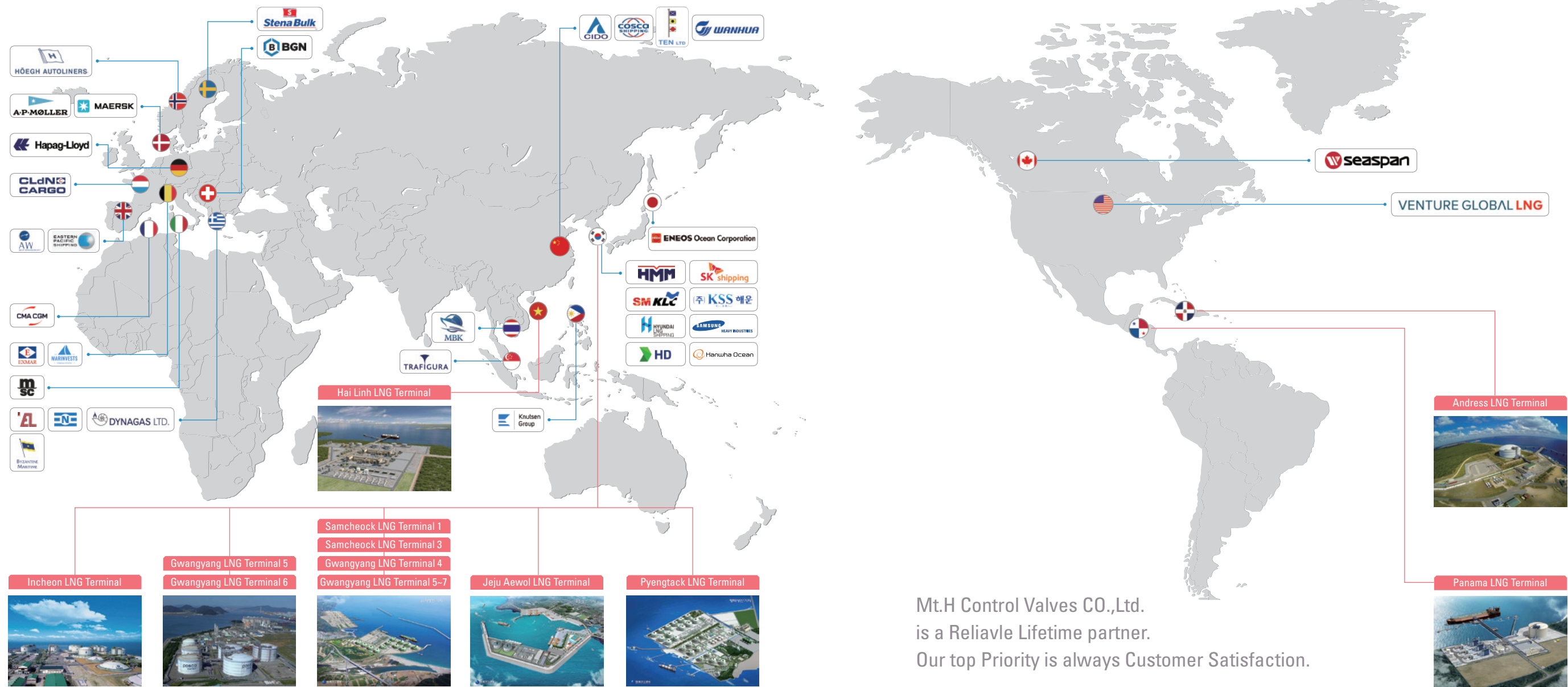
| Clean Room & Test Lab for Hydrogen Valves |



| ASME PSV Test lab |



Supply Reference



Mt.H Control Valves CO.,Ltd.
is a Reliavle Lifetime partner.
Our top Priority is always Customer Satisfaction.

No.	Area	SHIP OWNER	PROJECT NAME
1	DENMARK	A.P. Moller	16,200 TEU CLASS CONTAINER CARRIER
2	BELGIUM	EXMAR	45K LPGC
3	BELGIUM	MARINVEST SHIPPING	MAINVEST, 49K P/C
4	CANADA	SEASPAN	7000TEU Container Vessel
5	CHINA	COSCO SHIPPING SPECIALIZED CAR	7500 CEU LNG PCTC
6	CHINA	Tianjin Southwest Maritime Limited	Ethane carrier
7	CHINA	WANHUA CHEMICAL GROUP	98K VLEC
8	CHINA	WANHUA CHEMICAL GROUP	98K VLEC
9	DENMARK	MAERSK	2,100 TEU CLASS CONTAINER CARRIER
10	FRANCE	CMA-CGM	2,000 TEU CLASS CONTAINER CARRIER
11	FRANCE	CMA-CGM	15,000 TEU CLASS CONTAINER VESSEL
12	FRANCE	CMA-CGM	15,000 TEU CLASS CONTAINER VESSEL
13	FRANCE	CMA-CGM	13,000 TEU CLASS CONTAINER VESSEL
14	FRANCE	CMA-CGM	15,000 TEU CLASS CONTAINER VESSEL
15	FRANCE	CMA-CGM	8,000 TEU CLASS CONTAINER CARRIER

No.	Area	SHIP OWNER	PROJECT NAME
16	GERMANY	HAPAG-LLOYD	23,660TEU Container Vessel / Cargo Container
17	GREECE	BYZANTINE MARITIME	40,000m3 CLASS LPG/NH3/VCM CARRIER
18	GREECE	DYNAGAS	200K LNG Carrier
19	GREECE	EVALEND SHIPPING	91K LPG CARRIER
20	GREECE	EVALEND SHIPPING	88K VLGC
21	GREECE	GEOGAS MARITIME S.A.S.	40K CLASS LPG/NH3/VCM CARRIER
22	GREECE	NAVIUS	7,700 TEU CLASS CONTAINER CARRIER
23	GREECE	TSAKOS ENERGY NAVIGATION	115K Container Vessel / Cargo Container
24	HONGKONG	CIDO	91K VLGC
25	HONGKONG	CIDO SHIPPING	15,600 TEU CLASS CONTAINER CARRIER
26	ITALY	MSC	16,000 TEU CLASS CONTAINER VESSEL
27	ITALY	MSC	15,600 TEU CLASS CONTAINER CARRIER
28	JAPAN	ENEOS OCEAN	91K LPG CARRIER
29	KOREA	HMM	9,000TEU CONTAINER
30	KOREA	HMM	9K CNTR

No.	Area	SHIP OWNER	PROJECT NAME
31	KOREA	HSHI	174K LNG Carrier
32	KOREA	HYUNDAI LNG SHIPPING	174,000 CBM LNG CARRIER
33	KOREA	HYUNDAI LNG SHIPPING	91K LPG CARRIER
34	KOREA	HYUNDAI LNG SHIPPING	91K LPG CARRIER
35	KOREA	KLCSM, PANOCEAN, GM	174K LNG Carrier
36	KOREA	KSS LINE	91K LPG CARRIER
37	KOREA	KSS LINE	86K VLGC
38	KOREA	MPC	1,300 TEU OPEN TOP CONTAINER
39	KOREA	SK SHIPPING	174K LNG Carrier
40	KOREA	SK SHIPPING	174K LNG Carrier
41	KOREA	SK SHIPPING	91K LPG CARRIER
42	KOREA	SK SHIPPING	86K VLGC
43	LUXEMBOURG	CLdN	HMD 20K RORO
44	NORWAY	HOEGH AUTOLINERS	9,100 DF PCTC
45	NORWAY	PACIFIC GAS(HONGKONG) HOLDING LIM	Ethane carrier

No.	Area	SHIP OWNER	PROJECT NAME
46	PHILIPPINES	KNUTSEN	174K LNG Carrier
47	SINGAPORE	TRAFIGURA	40K CLASS LPG/NH3/VCM CARRIER
48	SWEDEN	Stena Bulk	6SI 50K chemical tanker
49	SWISS	BGN	86K LPG CARRIER
50	THAILAND	MBK	86K LPG CARRIER
51	Türkiye	Pascogas Deniz Isletmeleri A.S	45K LPGC
52	Türkiye	Pascogas Deniz Isletmeleri A.S	40K CLASS LPG/NH3/VCM CARRIER
53	U.K	AW Shipping Limited	86,000m3 Class VLGC
54	U.K	EASTERN PACIFIC SHIPPING	1,400TEM LNG DUAL FUEL CONTAINER CARRIER
55	U.K	EASTERN PACIFIC SHIPPING	174K LNG Carrier
56	U.K	EASTERN PACIFIC SHIPPING	7,900 TEU CLASS CONTAINER CARRIER
57	U.K	EASTERN PACIFIC SHIPPING	14,800 TEU CLASS CONTAINER CARRIER
58	U.K	EASTERN PACIFIC SHIPPING	38,000m3 Class LPG Carrier
58	US	VENTURE GLOBAL SHIPPING	200,000 CBM LNG CARRIER



WORLD WIDE SERVICE NETWORK

Mt.H Control Valves will respond quickly and accurately to customers through proven engineers.



[China Branch]
GLOBAL MARITIME SUPPLY PTY LTD
 Suite 303, Building T17-5, 230 new Jinqiao Road, Shanghai 201206

Thyde Shanghai Office
 Rm.338, No.15, Lane 201 Jinxiang Rd., Shanghai 201206, P.R.China

[Singapore Branch]
NIU BROS SINGAPORE PTE LTD
 53k Tuas South AVE1, Cove Industrial, Singapore 637278

[Europe Branch]
I&C Service BV
 Kelvinring 56d, 2952 BG Alblasterdam, The Netherlands

[California Branch]
COLUMBUS INT'L TRANSPORT CO.,LTD
 1568 N. GEMINI PL. ANAHEIM CA 92801

[Dubai, United Arab Emirates]
Sun Hai Electrical Services
 Flat M-13 I.T.Centre, Al Raffa, Bur Dubai, P.O.Box 215406. Dubai, United Arab Emirates

[Moscow Branch]
Starway Procurement LLC
 bld.6, Vernadskogo prospect, the city of Moscow, 119311, Russia01

[Malaysia Branch]
Sun Hai Engineering Sdn. Bhd.
 No 22, Jalan Mega 1/5, Taman Perindustrian, Nusa Cemerlang 81560 Johor, Malaysia

[Korea Branch]
Centra (Columbus Engineering & Trading)
 (3F) 7-1, Danggamseo-ro, Busanjin-gu, Busan, 614-103, Korea



Head Office & Factory

Address : #296 Noksansaneopjung-ro, Gangseo-gu, Busan, Korea
Contact No.: Rep. No.+82. 51. 974. 8800
 : Fax. No.+82. 51. 974. 8888

Mt.H CONTROL VALVES CO.,LTD.

Homepage : www.mth.co.kr
E-mail : [Domestic Sales] sale1@mth.co.kr
 [Overseas Sales] sale2@mth.co.kr

