

Supply Reference – Hydrogen Fueling Station



Head Office & Factory

Address : #296 Noksansaneopjung-ro, Gangseo-gu, Busan, Korea
 Contact No.: Rep. No.+82. 51. 974. 8800
 : Fax. No.+82. 51. 974. 8888

Mt.H CONTROL VALVES CO.,LTD.

Homepage : www.mth.co.kr
 E-mail : [Domestic Sales] sale1@mth.co.kr
 [Overseas Sales] sale2@mth.co.kr



E-CATALOG

Total Energy Solutions

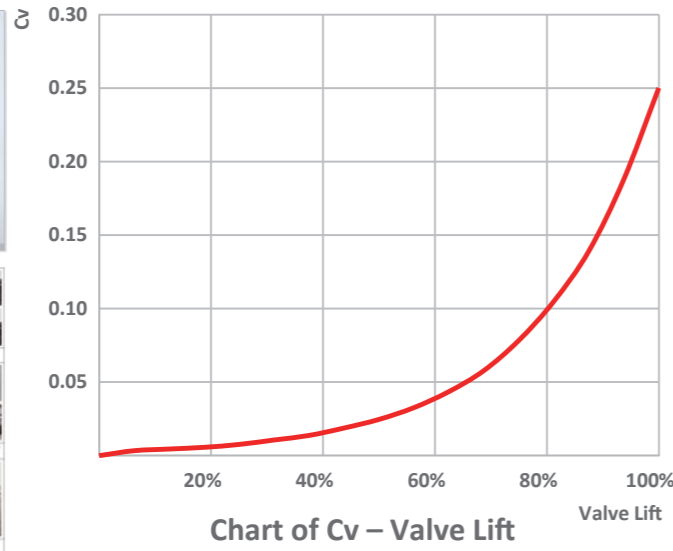
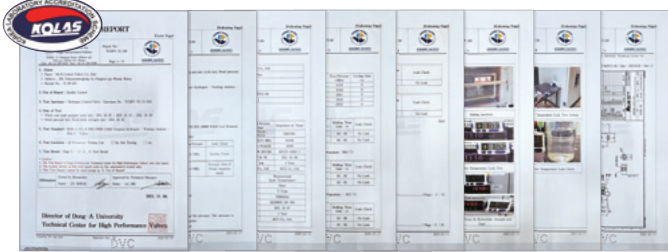
▼ Gas Hydrogen

99.9 MPa Flow Control Valves

Model	HV-CO				
Fluid	Gas Hydrogen, He, O ₂ , N ₂ , CO ₂ , CH ₄ , NH ₃				
Pressure Range	Up to 99.9 Mpa [Up to 999 barg]				
Working Temperature	-10 ~ 85°C				
Material	Body	Stainless Steel			
	Trim	Stainless Steel			
Connection Size	Tube Size	1/4"	3/8"	9/16"	3/4"
	Max. Cv	0.15	0.25	0.25	0.5

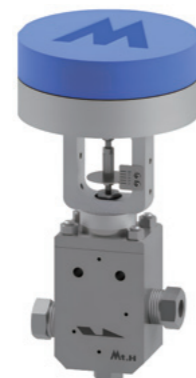


※ Stop valves without positioner also available.



99.9 MPa Flow Stop Valves

Model	HV-ST-01				
Fluid	Gas Hydrogen, He, O ₂ , N ₂ , CO ₂ , CH ₄ , NH ₃				
Pressure Range	Up to 99.9 Mpa [Up to 999 barg]				
Working Temperature	-10 ~ 85°C				
Material	Body	Stainless Steel			
	Trim	Stainless Steel			
Connection Size	Tube Size	1/4"	3/8"	9/16"	3/4"
	Max. Cv	0.15	0.25	0.25	0.5



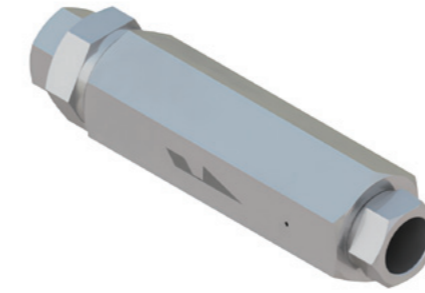
99.9 MPa Low Temperature Flow Stop Valves

Model	HV-ST-02				
Fluid	Gas Hydrogen, He, O ₂ , N ₂ , CO ₂ , CH ₄ , NH ₃				
Pressure Range	Up to 99.9 Mpa [Up to 999 barg]				
Working Temperature	-40 ~ 85°C				
Material	Body	Stainless Steel			
	Trim	Stainless Steel			
Connection Size	Tube Size	1/4"	3/8"	9/16"	3/4"
	Max. Cv	0.15	0.25	0.25	0.5



99.9 MPa Line Check Valves

Model	HV-CH-01					
Fluid	Gas Hydrogen, He, O ₂ , N ₂ , CO ₂ , CH ₄ , NH ₃					
Pressure Range	Up to 99.9 MPa [Up to 999 barg]					
Working Temperature	-18 ~ 85°C					
Material	Body	Stainless Steel				
	Trim	Stainless Steel + O-RING [90 Duro FKM]				
Connection Size	Tube Size	1/4"	3/8"	9/16"	3/4"	1"
	Max. Cv	0.15	0.25	2.3	4.7	7.4



※ Cracking Pressure : 20psi [1.38 bar] ± 30%

99.9 MPa Filter

Model	HV-ST				
Fluid	Gas Hydrogen, He, O ₂ , N ₂ , CO ₂ , CH ₄ , NH ₃				
Pressure Range	Up to 99.9 Mpa [Up to 999 barg]				
Working Temperature	-40 ~ 85°C				
Material	Body	Stainless Steel			
	Trim	Stainless Steel			
Connection Size	Tube Size	1/4"	3/8"	9/16"	3/4"
	Max. Cv	0.15	0.25	0.25	0.5



※ Filter size from 2µm

▼ Liquid Hydrogen

Emergency Shut-Off Valves

Model	HV-EV			
Fluid	Liquid Hydrogen, LNG, LPG, LN ₂ , LAr, LO ₂			
Pressure Range	Up to 2.0 MPa [Up to 20 bar]			
Working Temperature	-273(-196) ~ 85°C			
Material	Body	Stainless Steel		
	Trim	Stainless Steel		
Connection Size	DN	25	32	50
	PN	25		



※ Stop valves without positioner also available.

Lift Check Valves

Model	HV-CH-02			
Fluid	Liquid Hydrogen, LNG, LPG, LN ₂ , LAr, LO ₂			
Pressure Range	Up to 2.0 MPa [Up to 20 bar]			
Working Temperature	-273(-196) ~ 85°C			
Material	Body	Stainless Steel		
	Trim	Stainless Steel + PCTFE		
Connection Size	DN	10	15	25
	PN	40		



※ Cracking Pressure : 0.1 bar ± 30%

Conventional Safety Relief Valves

Model	HV-SV-02	
Fluid	Liquid Hydrogen, LNG, LPG, LN ₂ , LAr, LO ₂	
Setting Pressure Range	Up to 2.0 MPa [Up to 20 bar]	
Working Temperature	-273(-196) ~ 85°C	
Material	Body	A351 CF8M
	Trim	Stainless Steel
Connection Size	Flange Rating	Inlet x Outlet
	#150 x #150	1" x 2"

